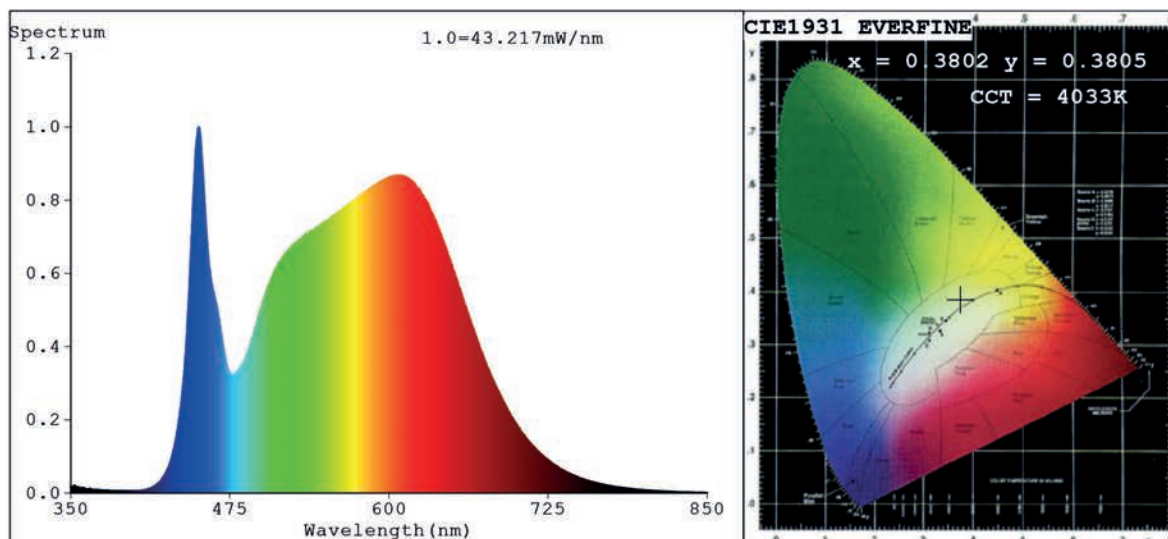


## Spectrum Test Report



### Color Parameters:

Chromaticity Coordinate:  $x=0.3802$   $y=0.3805$   $u'=0.2235$   $v'=0.5032$   
 CCT=4033K(Duv=0.0018) Dominant WL:Ld =578.0nm Purity=28.3%  
 Ratio:R=19.2% G=76.8% B=4.0%;;Peak WL:Lp=450.8nm FWHM=23.7nm  
 Render Index:Ra=90.5 CRI=86.2 TM30:Rf=89 Rg=98  
 R1 =90 R2 =94 R3 =96 R4 =91 R5 =89 R6 =91 R7 =93  
 R8 =80 R9 =49 R10=84 R11=91 R12=70 R13=91 R14=98 R15=86

### Photo Parameters:

Flux = 2315 lm Eff. : 102.07 lm/W Fe = 7.527 W

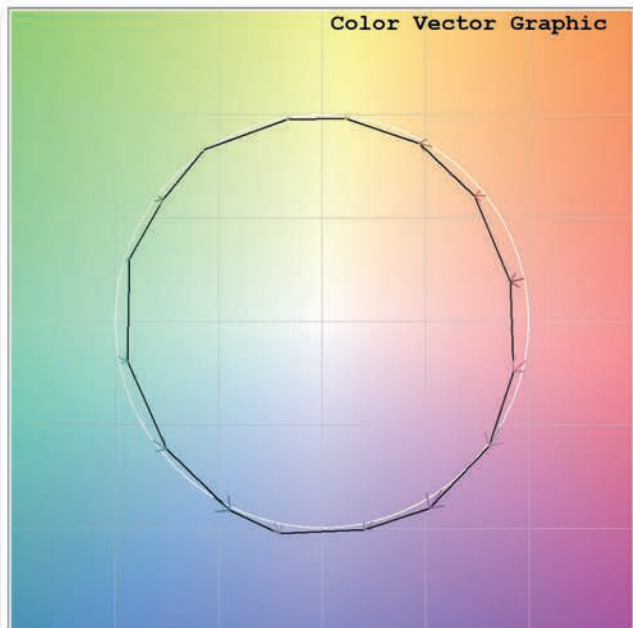
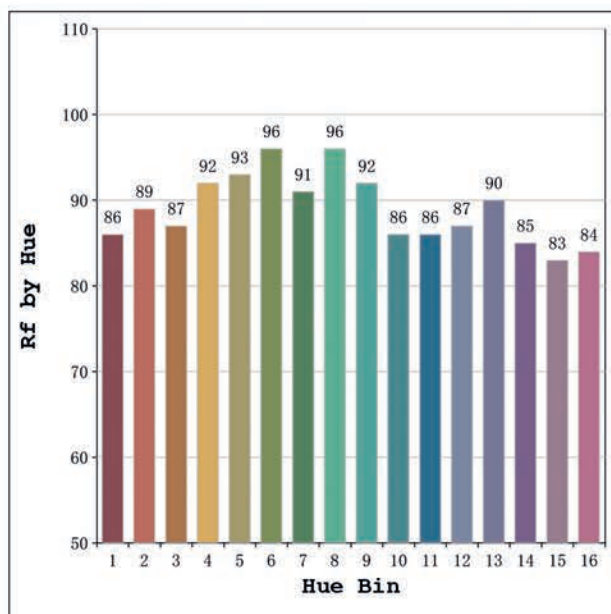
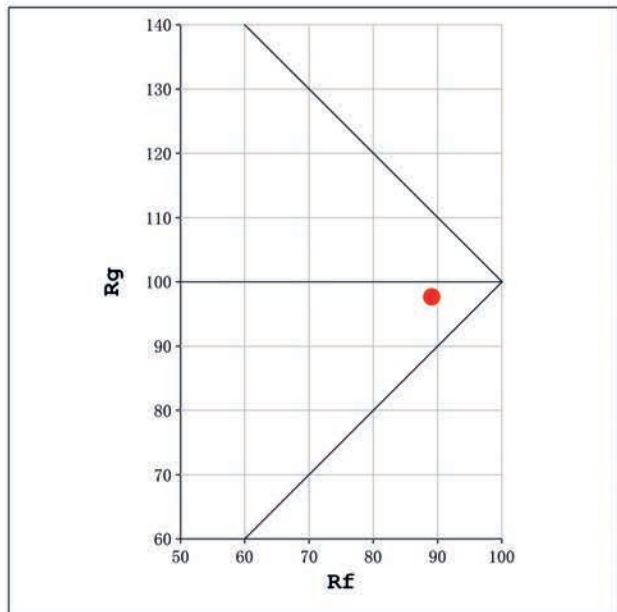
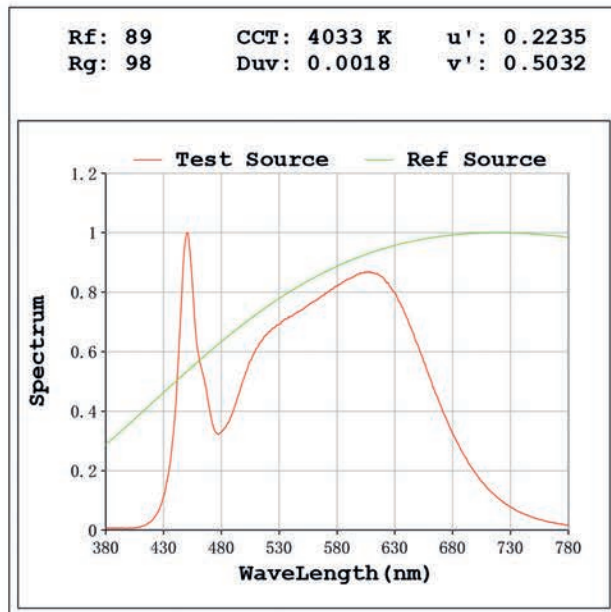
### Electrical parameters:

V = 23.998 V I = 0.9449 A P = 22.68 W PF = 1.000

Status: Integral T = 687 ms Ip = 51644 (79%)

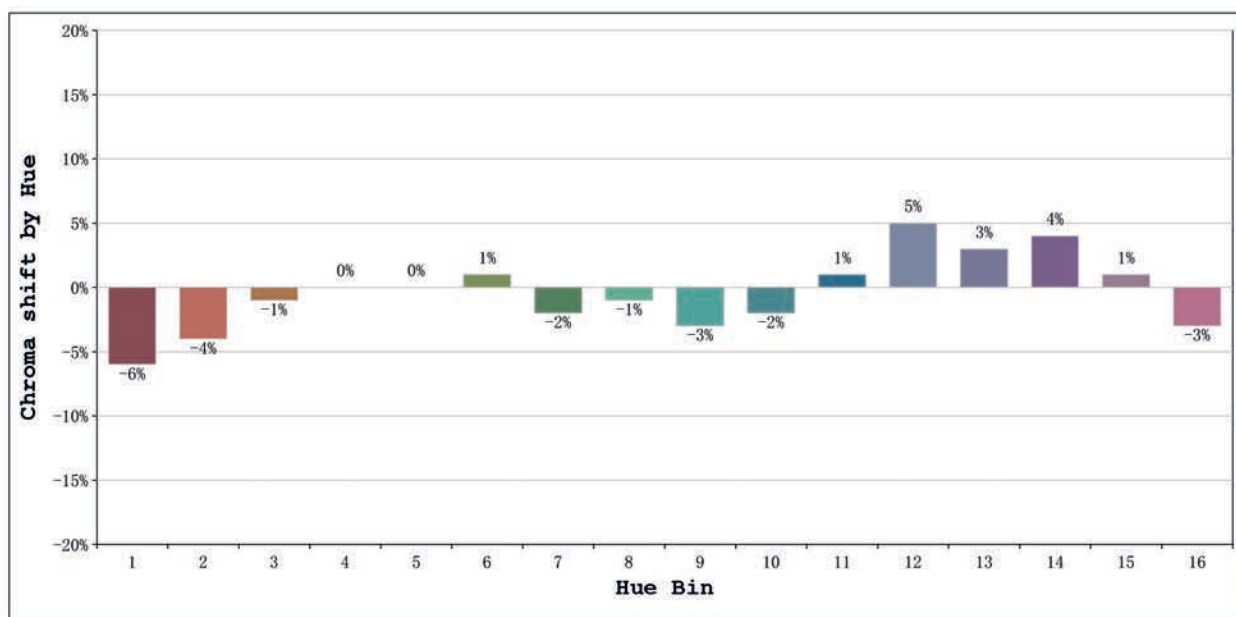
Model:Ecoled Boxled 30° 4000K  
 Tester:Sergio Carneros  
 Temperature:20Deg  
 Manufacturer:Luz Negra

Number: 31.247  
 Date:2025-06-16 13:35:23  
 Humidity:50%  
 Remarks:tira de 106.5cm



Model:Ecoled Boxled 30° 4000K  
 Tester:Sergio Carneros  
 Temperature:20Deg  
 Manufacturer:Luz Negra

Number: 31.247  
 Date:2025-06-16 13:35:23  
 Humidity:50%  
 Remarks:tira de 106.5cm



			Graphic shift(%)	
Hue Bin	Hue Angle	Rf	Chroma	Hue
1	0.0° - 22.5°	86	-6	0
2	22.5° - 45.0°	89	-4	3
3	45.0° - 67.5°	87	-1	6
4	67.5° - 90.0°	92	0	3
5	90.0° - 112.5°	93	0	2
6	112.5° - 135.0°	96	1	0
7	135.0° - 157.5°	91	-2	-2
8	157.5° - 180.0°	96	-1	0
9	180.0° - 202.5°	92	-3	3
10	202.5° - 225.0°	86	-2	7
11	225.0° - 247.5°	86	1	10
12	247.5° - 270.0°	87	5	3
13	270.0° - 292.5°	90	3	-4
14	292.5° - 315.0°	85	4	-9
15	315.0° - 337.5°	83	1	-9
16	337.5° - 360.0°	84	-3	-6

Model:Ecoled Boxled 30° 4000K  
 Tester:Sergio Carneros  
 Temperature:20Deg  
 Manufacturer:Luz Negra

Number: 31.247  
 Date:2025-06-16 13:35:23  
 Humidity:50%  
 Remarks:tira de 106.5cm